

A photograph of a dense forest with a path leading through tall trees with vibrant green foliage. The text "Northern A.T. Landscape Partnership" is overlaid in white.

# Northern A.T. Landscape Partnership





# 2018 The Action Fund Grants

## Land Protection

Allocated \$500,000 to nine partner organizations for 12 land protection projects. Contributes to the protection of 23,000+ acres of conservation lands.

## Capacity Building

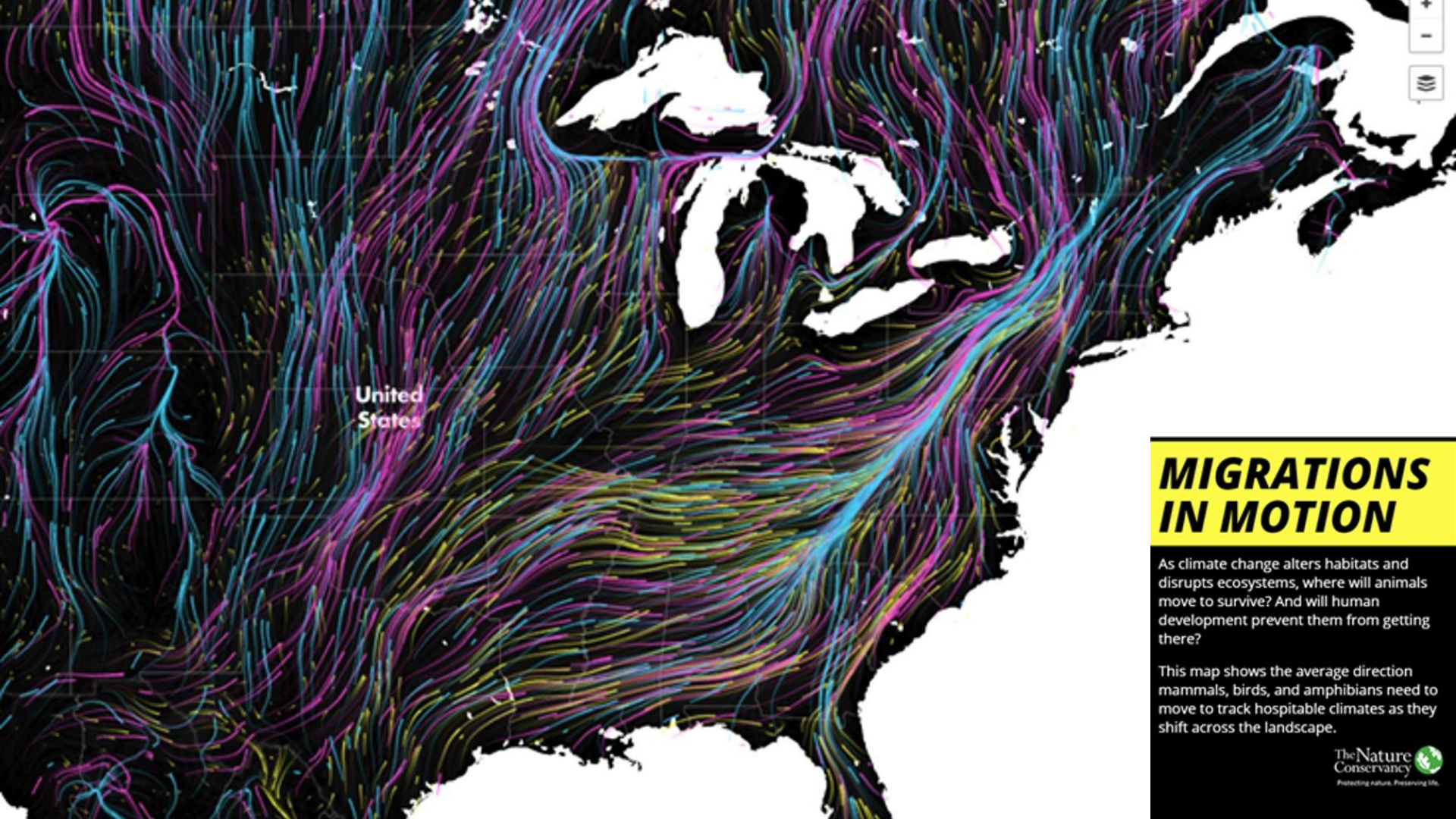
Allocated \$149,980 (out of \$150,000) for nine projects that advance conservation work across the A.T. landscape.



A photograph of a dense forest with a path leading through tall trees. The trees have dark trunks and lush green foliage. The path is a narrow, light-colored trail that winds through the forest floor, which is covered in green undergrowth. The lighting is soft, suggesting a misty or overcast day.

35,000+ acres protected in  
2018 by members of the  
A.T. Landscape Partnership





United  
States

## **MIGRATIONS IN MOTION**

As climate change alters habitats and disrupts ecosystems, where will animals move to survive? And will human development prevent them from getting there?

This map shows the average direction mammals, birds, and amphibians need to move to track hospitable climates as they shift across the landscape.

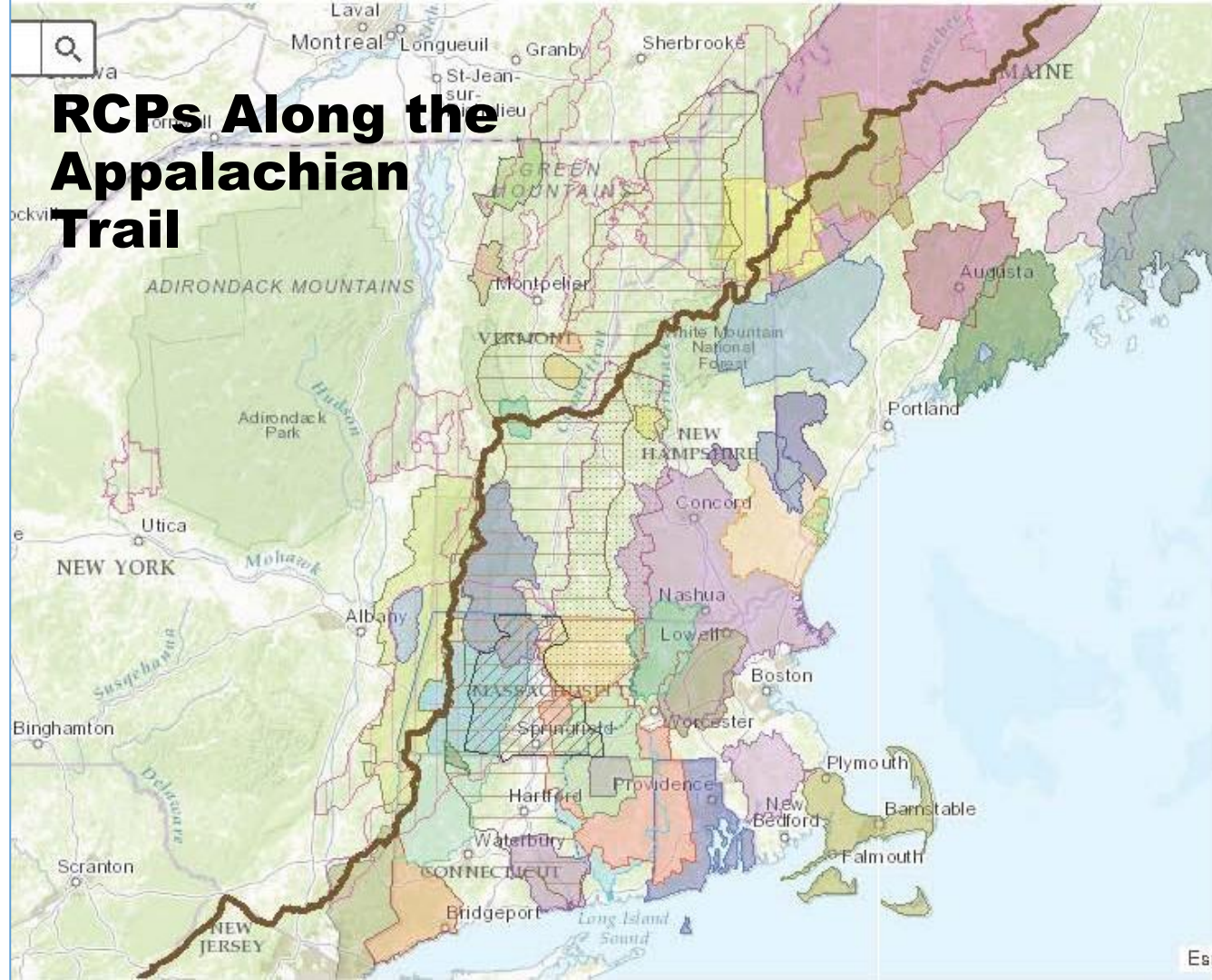
“

*A realm and not merely a trail  
marks the full aim of our  
efforts.*

*Benton MacKaye,  
conservationist, planner and creator of  
the Appalachian Trail*



# RCPs Along the Appalachian Trail





A misty forest scene with a path leading through tall trees. The trees have dark trunks and green foliage. The mist is thick, creating a soft, ethereal atmosphere. The path is narrow and leads into the distance.

# Cultural and Historic Resource Partnerships

Simon Rucker  
Maine Appalachian Trail Land Trust



## Next Century Priorities

- Scenery Along the Treadway
  - Views Beyond the Corridor
  - Natural Resource Quality and Ecological Connectivity
  - Visitor Experience
  - American Heritage
- 

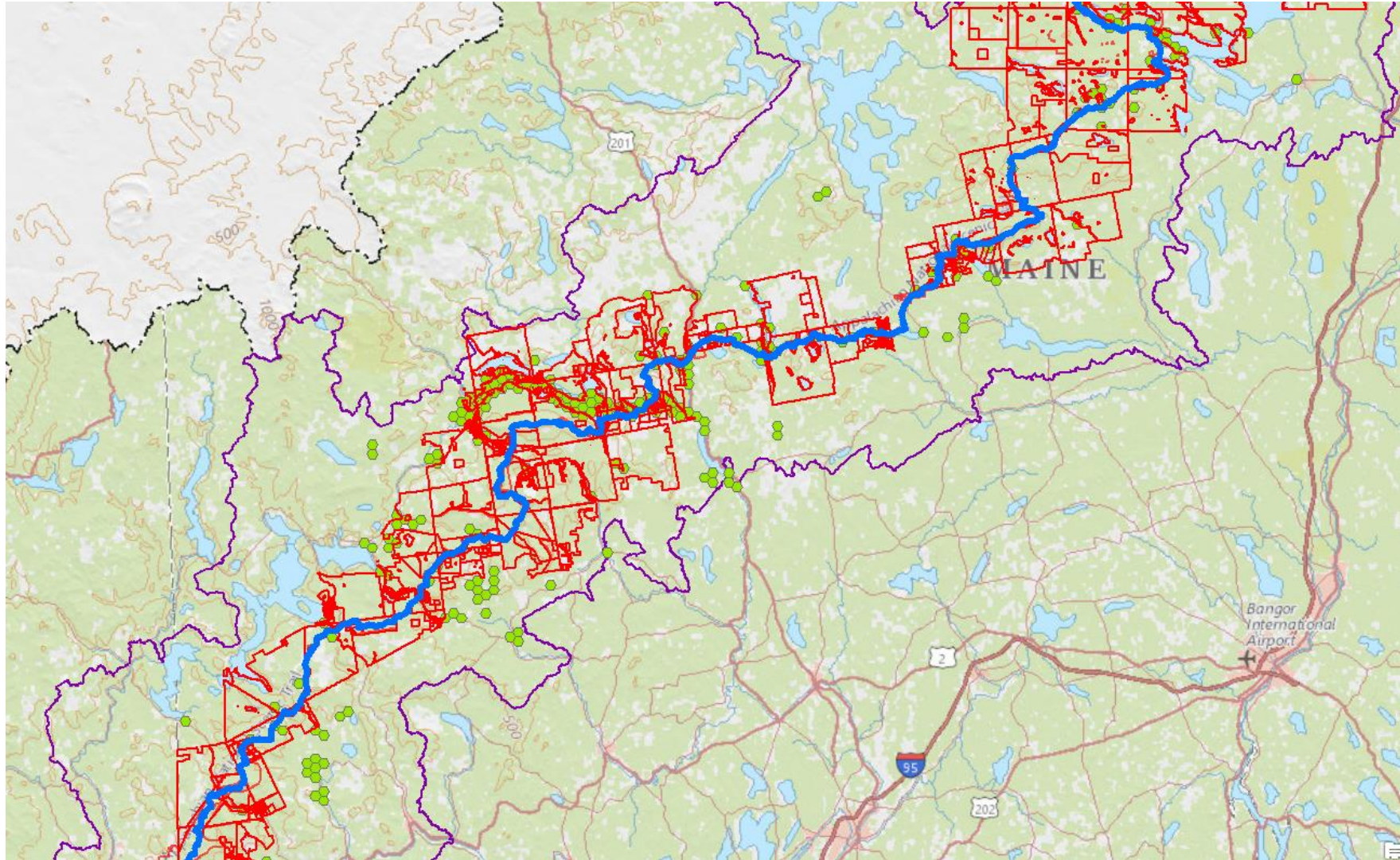


Mount Abram Township	Kingfield Historical Society	Y	Y	Kirsten Brown Burbank
Kingfield	Kingfield Historical Society	Y		Kirsten Brown Burbank
Carrabassett Valley	Kingfield Historical Society	Y		Kirsten Brown Burbank
Wyman Township	N			
Dead River Township	Dead River Area Historical Society	Y	Y	Mary Henderson
Carrying Place Town Township	Arnold Expedition Historical Society	Y	Y	Steve Clark
Carrying Place Township	Arnold Expedition Historical Society			
The Forks Plantation	Old Canada Road Historical Society	Y	Y	Marilyn Gondek
Caratunk	Old Canada Road Historical Society	Y		Marilyn Gondek
Bald Mountain Township	Old Canada Road Historical Society	Y		Marilyn Gondek
Blanchard Township	Monson Historical Society	Y	Y	Glenn Poole
Monson	Monson Historical Society	Y		Glenn Poole
Elliotsville Township	Monson Historical Society	Y		Glenn Poole

















**Appalachian Trail  
Visitor Center**

**Built 1889**  
National Register of Historic Places  
Gar 1889-1940  
Engine House/Fire Dept. 1889-1972  
Juanita Grange 1902-1954  
Town Hall - Library - Jail 1940-1972  
Dar 1972  
American Legion 1992  
Monson Historical Society 2004



A misty forest scene with a path leading through tall, thin trees. The trees have dark trunks and are covered in vibrant green foliage. The ground is also covered in green undergrowth. The overall atmosphere is serene and ethereal.

# Viewsheds

Jonathan Milne  
LightHawk



A View to  
Engage



LIGHT HAWK



A View to Inform



LIGHT HAWK





A View to  
Educate



LIGHT HAWK





LIGHT HAWK





## A View to Inspire Action



LIGHT HAWK





# Land Trusts and Birds: Partners in Strategic Conservation

*2018 RCP Network Gathering*

Sara Barker, Cornell Lab of Ornithology



Sarah K. deCoizart  
Perpetual Charitable Trust

The **Cornell** Lab  of Ornithology

 **Land Trust Alliance**  
Together, conserving the places you love



# Land Trust Bird Conservation Initiative



- Fundraising Directory / Land Trust Small Grants Program
  - Resources and Tips
  - 4 grants in 2017 (CO, WA/OR, VT, ME); 3 in 2018 (CA, ME, NY/CT)

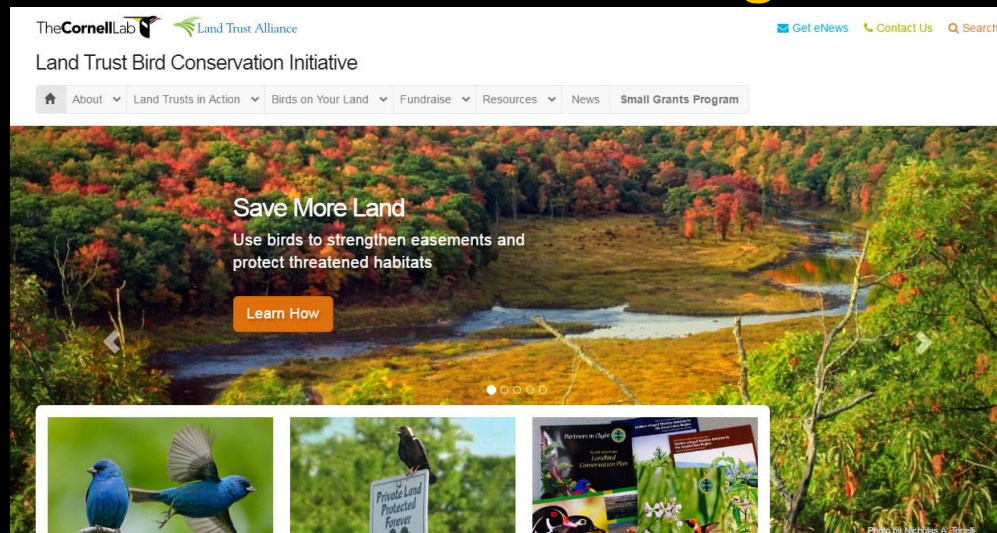
- Conservation Resources

- Landscape-scale Plans (SWAP)
- BMPs
- Citizen Science Projects
- PIF/Joint Ventures/IBA Program

- Planning Tools

- Bird Conservation Collaboratives
- eBird (online checklist program)

[www.birdtrust.org](http://www.birdtrust.org)



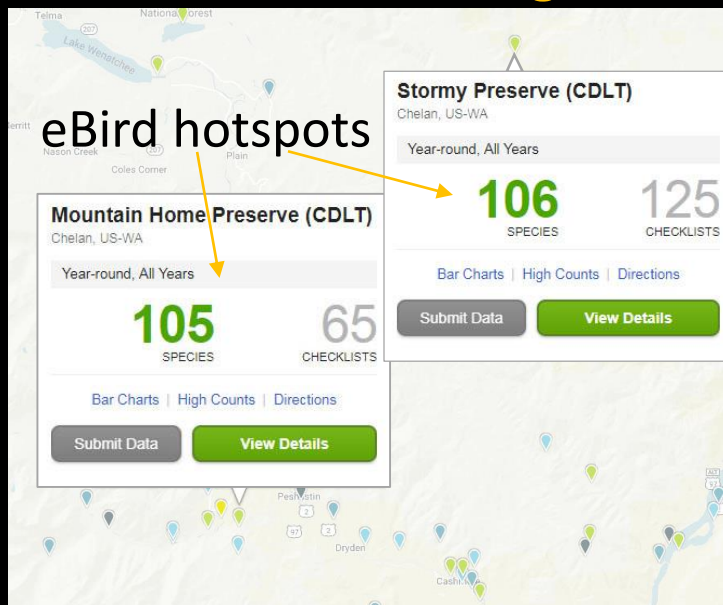


# Success Story: Chelan Douglas Land Trust and eBird

“offering eBird routes on our lands is allowing us to introduce a new community of birders to our work, effectively growing our land trust community through binocular lenses.”

- Free data storage and monitoring tool (hot spot creation)
- Community engagement and reach new audiences
- Inform management and support decision making about conservation investments

[www.ebird.org](http://www.ebird.org)





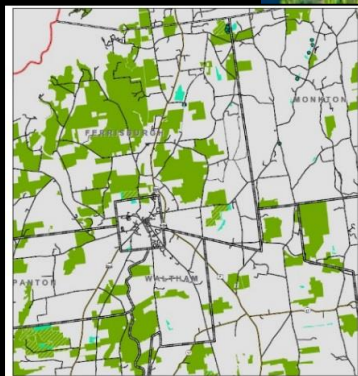
# Western Vermont 'Golden Chain' Collaborative

Technical Training + Conservation Resources + Habitat Management



CHARLOTTE LAND TRUST  
ESTABLISHED 1986

Cornell Land Trust  
Small Grant Recipient!



BEST MANAGEMENT PRACTICES FOR  
Golden-winged Warbler Habitats in  
the Great Lakes Region  
A Guide for Land Managers and Landowners





# Partnership: RCP Northeast Bird Habitat Initiative

- **Goal 1:** Raise consciousness about the importance of birds and how bird conservation can help advance regional land trust priorities.
- **Goal 2:** Support and encourage RCP members to adopt eBird.
- **Goal 3:** Improve, conserve, and manage habitats supporting two target species populations in forestlands and farmlands.



American Kestrel



Wood Thrush



A photograph of a misty forest path. The path is narrow and leads into the distance, flanked by tall, slender trees with dense green foliage. The ground is covered in a thick layer of green grass and low-lying plants. The overall atmosphere is serene and natural.

# Massachusetts Water Supply Protection

Robert O'Connor  
Executive Office of Energy and Environmental  
Affairs

# Summary of MA Water Supply Protection – A Daunting Challenge

- **Water Supply Protection Zones – Public Wells (1/3 of supplies):**
  - There are 460,000 acres that drain to public wells of which only 24% is protected.
- **Water Supply Protection Zones – Public Reservoirs (2/3 of supplies):**
  - There are 550,000 acres that drain to public reservoirs of which 47% is protected





# Massachusetts Water Supply Protection Initiatives

- Drinking Water Protection Grants in partnership with RCP's
- Leveraging Protection and Public Access on Existing Water Supply Lands
- Leveraging Water Utility Funding
- Conserving drinking water lands via other programs



# Grants - 13 Years of Accomplishments

- Since 2005, MA has awarded 69 Drinking Water Grants totaling \$15.2 million that protected 3,856 acres and leveraged \$35 million non-state funds and gifts – most grants involve land trusts



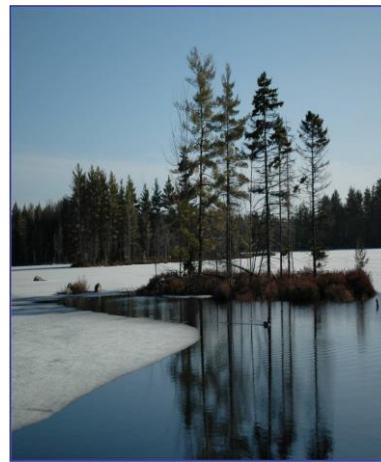


# Drinking Water Supply Protection Grant Program

**Open to:** municipal public water suppliers  
and water/fire districts

**Maximum award:** \$300,000 (50% of total)

For acquisition, title, survey, baseline, etc.



# EEA Agency Water Supply Projects

- MA DCR and DFG have purchased Conservation Restrictions over city water supply lands that increase protection and allow passive recreation with payments often used by city's to protect more water supply land.
    - ▣ Fitchburg – 1,800 acres
    - ▣ Fall River – 4,200 acres
    - ▣ New Bedford – 3,100 acres
    - ▣ Clinton – 500 acres
    - ▣ In process: Leominster and Worcester
- Old mill cities often have the best water supplies!



An aerial photograph showing a large, dark blue reservoir in the upper half of the frame. Below the reservoir, a dense urban area with numerous buildings and streets is visible. The surrounding landscape is a mix of green fields and brown, wooded areas. The text is overlaid on the upper left portion of the image.

**Fall River Bioreserve – 8,000 acres protected with \$14 million from state , city and land trust. Water supply is now 90%+ protected!**

# Fitchburg Water Supply Watershed

DFG conservation easement over 1,800 acres of city water supply land with new trails and stewardship and City utilized funding to leverage a state grant and Forest Legacy on new parcels – creating a greenway from City Common to NH in partnership with North County Land Trust

Similar projects could happen in North Adams, Williamstown..





# Fitchburg Water Supply Lands Conservation Project and Vicinity

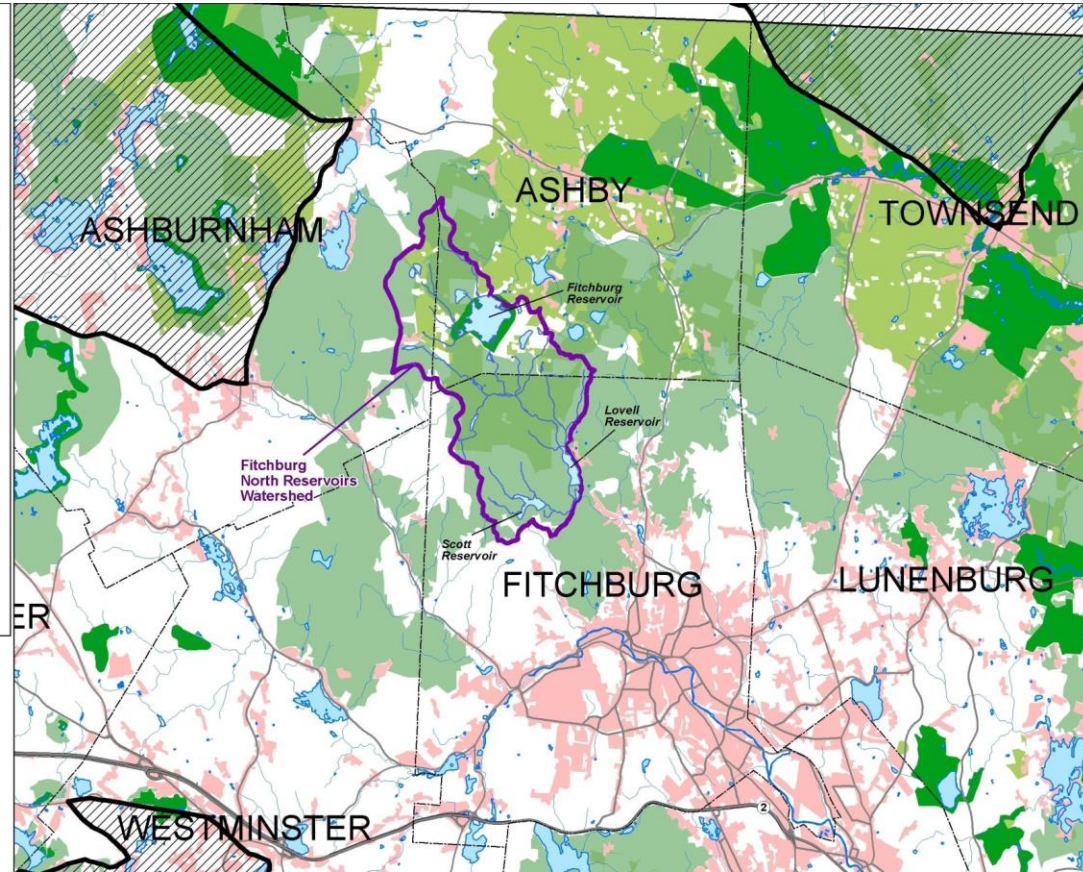
## Legend

- Watershed for City of Fitchburg  
Reservoirs (DEP Zone C)
- BioMap Core Habitat
- BioMap Supporting Natural Lands
- State Land Conserv. Plan, 2004
- TNC Forest Matrix
- Medium and High  
Density Development
- Major Roads

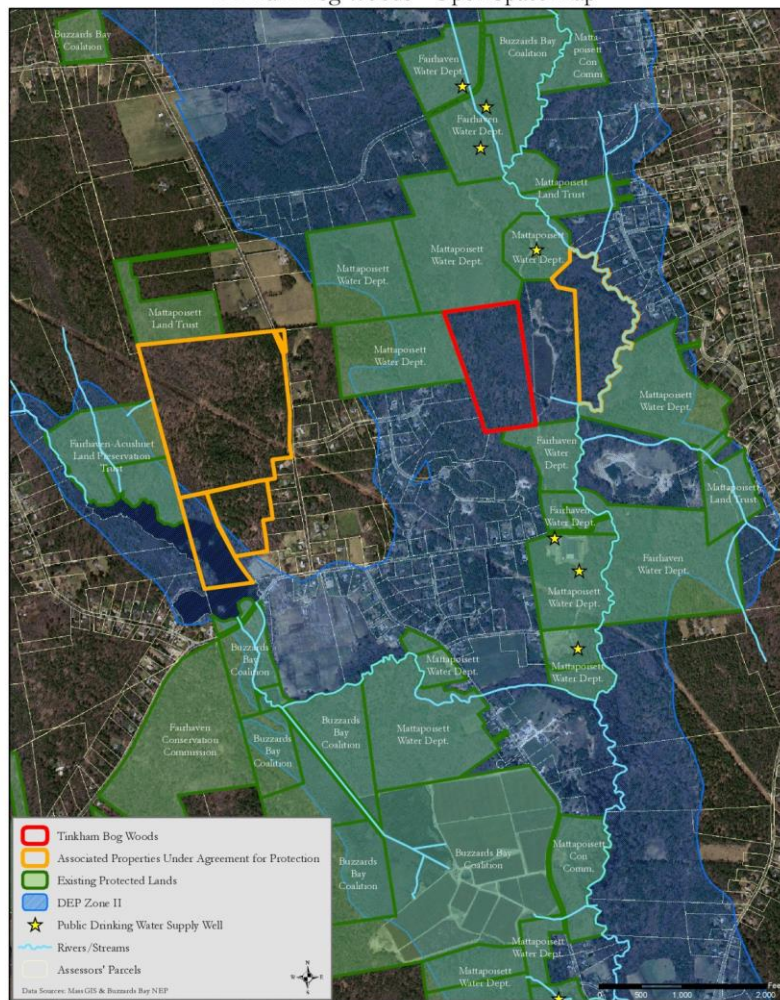
0 1 2 3 Miles

All data displayed on this map  
were acquired through MassGIS.

Map produced by:  
The Trustees of Reservations  
with North County Land Trust  
April 30, 2008.



# Tinkham Bog Woods - Open Space Map





A photograph of a misty forest path. The path is narrow and covered in green moss, leading into a dense forest of tall, thin trees with green foliage. The mist is thick, creating a soft, ethereal atmosphere. The trees are mostly deciduous, with their leaves in various shades of green. The path is flanked by trees on both sides, and the mist fills the background, making the trees in the distance appear soft and out of focus.

# Engaging Communities

Charlie Tracy

National Park Service

Rivers Trails and Conservation Assistance Program





CASCADIA COMPOSERS & LANDSCAPE MUSIC COMPOSERS NETWORK PRESENT

# LANDSCAPE MUSIC

*Rivers and Trails*

NEW MUSIC COMMEMORATING THE 50<sup>TH</sup> ANNIVERSARIES OF THE  
NATIONAL TRAILS SYSTEM ACT & THE WILD AND SCENIC RIVERS ACT

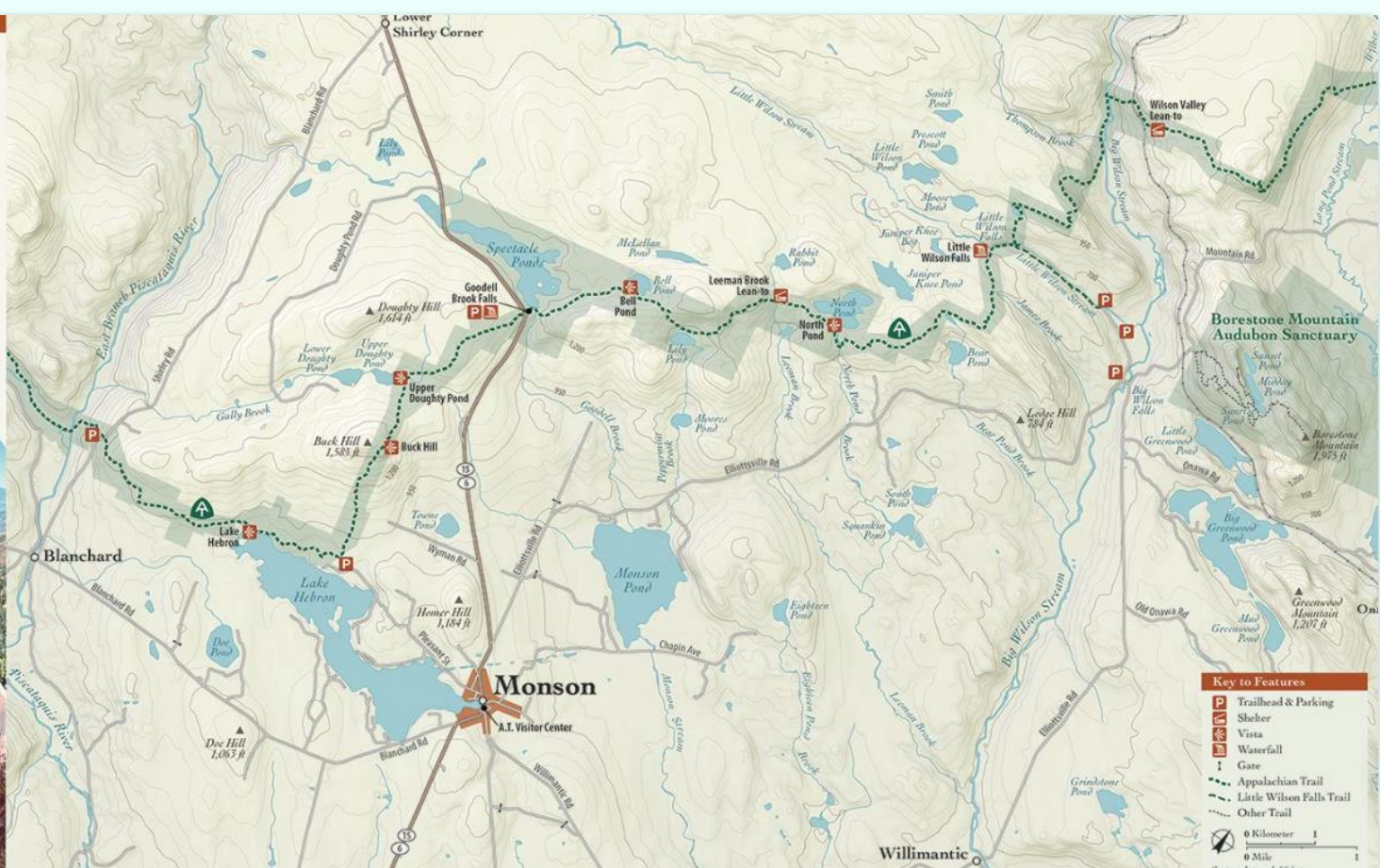
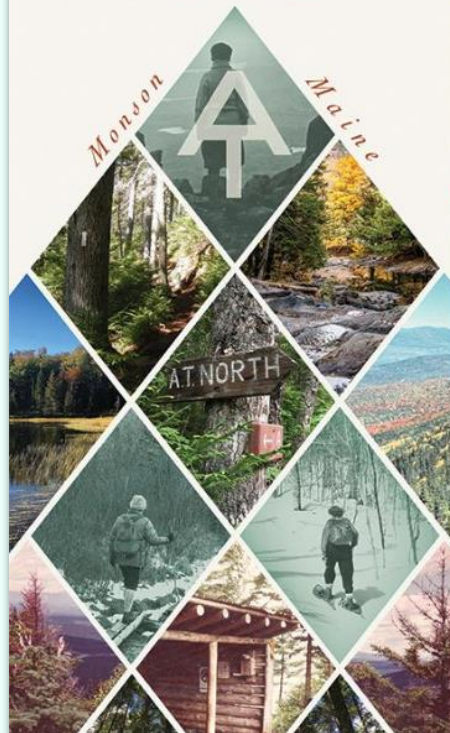
Engaging Artists: Landscape Music Concert Series





**Engaging Young People: Massachusetts Youth Trails Summit at Bascom Lodge**

# Appalachian Trail Day Hikes



Engaging Communities: AT Day Hikes Brochures



# New England Trail • Scenic Kiosk

**About:**

This kiosk is part of an eight piece art installation created by William Van Beckum. The kiosks are positioned along the New England Scenic Trail in Connecticut and Massachusetts.

The images on these kiosks are created by appropriating photographs posted to Instagram by hikers like you. This image is made up of 27 images from nearby Mt. Higby.

**Mission:**

Drawing on the tradition of scenic imagery in the American conservation movement, these installations follow the example set by Ansel Adams and Edward Weston to encourage tourism, recreation, and conservation efforts.

The value of our New England Scenic Trail to local communities like Middletown is monumental. These kiosks are meant to harness the power of scenic imagery in celebration of the NET and encourage community members to share the landscape through social media.

**Participate:**

Use the Instagram hashtag #findyourtrail and #myNETrail to share your images with other hikers.

**More Kiosks:**

Find more Scenic Kiosks at trailheads around MA and CT from now until Oct 31.

- Chittenden Park (Gulford, CT)
- Giuffrida Park (Meriden, CT)
- Mount Tom State Reservation (Holyoke, MA)
- Skinner State Park (Amherst, MA)
- Mount Holyoke Range State Park (Amherst, MA)
- Wendell State Forest (Wendell, MA)

For suggested hikes and maps visit:  
[www.newenglandtrail.org](http://www.newenglandtrail.org)

For more information about the artist visit:  
[www.williamvanbeckum.com](http://www.williamvanbeckum.com)



Supported by the National Park Service's Connect Trails to Parks program, commemorating the 50th anniversary of the National Trails System Act in 2018.



## Engaging Communities: Instagram Trailheads





A photograph of a misty forest path. The path is narrow and leads into the distance, flanked by dense green foliage and trees. The trees have dark trunks and vibrant green leaves. The mist is thick, creating a soft, ethereal atmosphere. The overall color palette is dominated by various shades of green and grey from the mist.

Northern A.T. Landscape Partnership

Thank you!